

PRISM

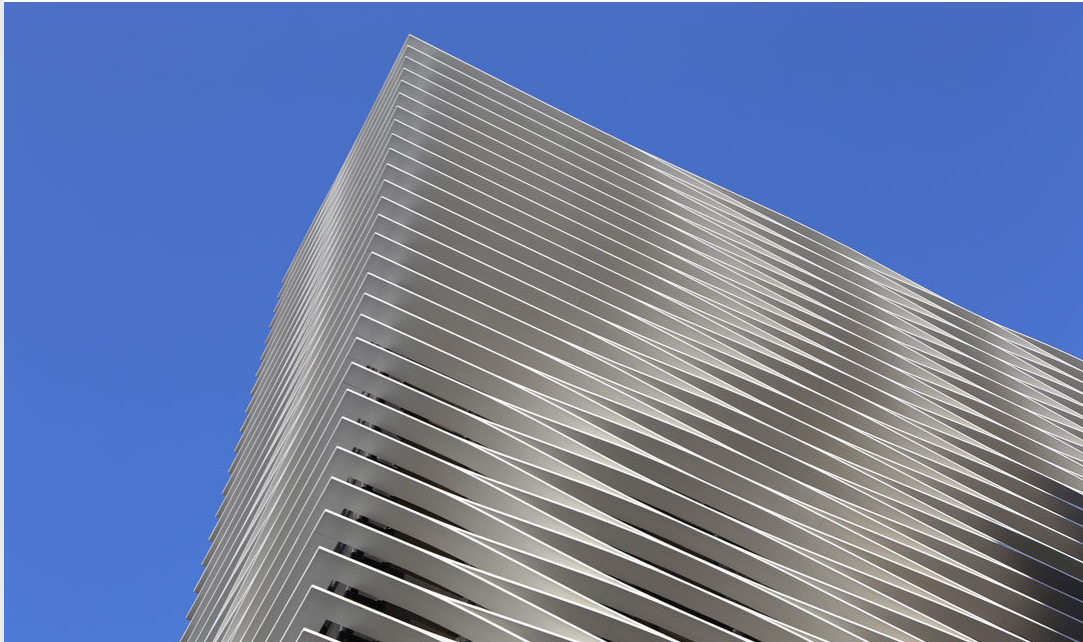
Sustainability in the Built Environment

Building Science ▾ Industry News Color and Design Historic Preservation Urban Planning

PROJECT PROFILES

SOMA's WAVE wins 2017 Architizer A+ Awards

Posted by Editorial | May 16, 2017 | 0 🗨️ | ★★★★★



WAVE, Beirut, Lebanon. Credit: Michel Abboud

International architecture firm [SOMA](#) announced May 14, that the [Michel Abboud](#)-designed [WAVE](#), a marvel of both contemporary

2017 EDITORIAL CALENDAR

[2017 Editorial Calendar](#)

EDITIONS OF

PRISM

[PRISM MARCH 2017](#)

[PRISM FEBRUARY 2017](#)

[PRISM JANUARY 2017](#)

[PRISM December 2016](#)

[PRISM November 2016](#)

[PRISM October 2016](#)

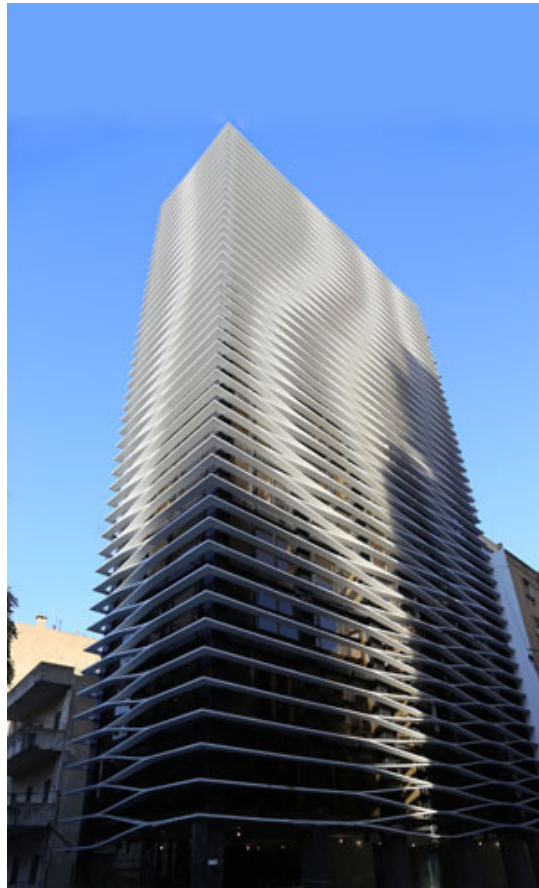
[PRISM September 2016](#)

CATEGORIES

[Commercial building](#)

design and ingenious problem solving, is a winner in the Architizer A+ Awards for best mid-rise building.

The Architizer A+ Awards is the largest architecture awards program that celebrates the year's best architecture, appreciates meaningful architecture in the world, and champions its potential for a positive impact on everyday life. The winners were announced at the [Architizer](#) website on May 12.



WAVE, Beirut, Lebanon. Credit: Michel Abboud

"I am honored that WAVE has won this award. It is exciting to see my design chosen among so much great talent," said Mr. Abboud. "We wanted to design a responsive parametric building that reacts with the site and the program, and I'm thrilled that our vision resonated with the public jury."

While SOMA is renowned for double skin projects, WAVE wears its second skin out of necessity due to location and exposure: the longer site edge faces south and the shorter one faces west and demands that one extremely important and problematic issue be solved in terms of solar exposure and heat. A unique identity was created through this second layer skin or sunscreen.

Extensive research revealed that a horizontal louvered system was efficient for sun screening. The regenerated parametric design reacts to an interior program whereby the depth of the louvers is variable according to which interior function it is shading and which interior function requires more or less privacy.

The less privacy required, the thinner the louver, the less sun shading, the thinner the louver; the more privacy, the deeper the louver and more sun screening, the deeper the louver. The effect: organic waves. WAVE not only contrasts starkly against the present buildings awaiting demolition and/or renovation, but also assertively against future, new structures yet to be constructed.

Education

Healthcare

Interior design

Landscape architecture

Mixed-use

Multifamily

Retail

Sporting and athletic

Transportation

MATERIALS

Air Barriers

Brick

Building envelope

Coatings

Concrete

Curtain walls

Exterior paints and coatings

Fire-resistive

Flooring

Glass

Gypsum

Insulation/SPF

Interior paints

"I am very proud of WAVE and how our concept came to life. The site was challenging because of its corner location, the result a sculptural element that emerges within the site." said Mr. Abboud.



WAVE, Beirut, Lebanon. Credit: Serjios

About SOMA

International architecture firm SOMA, headquartered in New York, was founded in 2004 by Michel Abboud. With its focus on incorporating craft, digital technologies and environmental responsibility, the firm's designs and work have attracted critical acclaim for their boundary pushing nature. SOMA's work is rising around the world today-in New York, Dubai, Lebanon and other international markets-with remarkable offerings of luxury hotel, condominium and mixed-use developments that underscore the firm's cutting edge appeal.

SHARE:



RATE:



< [PREVIOUS](#)

[EXTECH offers LIGHTWALL 3440 translucent wall system with three new glazing options](#)

[NEXT](#) >

[Owens Corning to acquire Pittsburgh Corning](#)

ABOUT THE AUTHOR

Editorial

Metal

Outdoor surfaces

Roofs

Waterproofing

Wood

SIGN UP FOR PRISM ENEWS

Click here to get the latest news in sustainability in the architectural built environment.

UPCOMING EVENTS

NeoCon 2017

June 12 - June 14

2017 AAMA Summer Conference

June 18 - June 21

2017 BOMA International Annual Conference & Expo

June 24 - June 27

CONSTRUCT 2017

September 13 - September 15

2017 Healthcare Facilities Symposium & Expo

September 18 - September 20